

4365 McLeod Road - Paradise Valley Exhibition Grounds

FALL FAIR

September 24 & 25 Noon - 5pm

TRAIN

MUSIC

EXHIBITIONS

50/50 RAFFLE

ZUKE RACE



*John
Phon. 22*

Fall Fair 2022 Information

Theme: Growing Back Together

September 24-25, 2022

Noon-5:00

Coordinator Contact Info

Fall Fair Coordinator – Mark Gisborne 604-414-3694

Exhibit Hall Coordinator – Kathy Hodgins 604-413-0896

Livestock Coordinator – Greg Rebane 604-223-2407

Volunteer Coordinator – Vanessa Adams-Valderrabano 604-578-8416

Vendor Coordinator – Juhli Jobi 604-414-3327

General Rules and Regulations

1. Entries deadlines and important dates:

Entry Forms (not exhibits) are to be submitted on **Sept 17 (10:30-12:30) & Sept 18 (12:30-2:30)** at the Farmers' Market Information Desk. (same location as the Fall Fair)

Late Entry Forms will have a 50% late fee applied, and may be submitted between **Noon and 6:00 pm, Friday Sept 23rd.**

Drop-Offs: EXHIBITS (the actual item or animal you are entering) **MUST ARRIVE AT THE EXHIBIT HALL OR LIVESTOCK BARN between Noon and 6:00 pm, Friday, Sept 23, AFTER WHICH TIME THE DOORS WILL BE CLOSED AND NO EXHIBITS WILL BE ACCEPTED**

2. Judging Schedule: Judging takes place Friday evening. If there are too many items to judge at that time, some may be judged Saturday morning.
3. Exhibits and prizes are to be picked up the **Sunday of the Fair between 5 pm and 7 pm**. Any prizes not collected by **7 pm Sunday, Sept 25** will be considered a donation to the Fall Fair.
4. Entries must be made on the proper entry forms or photocopies and be accompanied by entry fees in full. **ENTRY FEE IS NON-REFUNDABLE ON CANCELLED ENTRIES**
5. Entry forms and payment should be paid in cash or by cheque made payable to P.R.F.A.I.
6. One entry per exhibit per class.
7. All entries must be the work of, or have been grown, by the Exhibitor and entered in the name of the Exhibitor.
8. All livestock entries must be in good health free of parasites.
9. In any class, the judges have the power to award any such prize as they deem the entry deserves. In no case will a prize be awarded unless the exhibit is worthy.
10. The Judge's decision is final.
11. All prize awards, ribbons and entries **must remain on display until Sunday at 5 pm.**
12. While the Association will take precautions to ensure safety of articles and stock exhibits, it must be distinctly understood that the owners are required to assume all risks
13. Fall Fair will use the American System of Judging. Exhibits in this system are compared against a standard of perfection, as well as against the other entries in the competition. All exhibits in a particular class are looked at and ranked with only one selected for first place, second place, third place, etc. If there are no high quality exhibits, at the judge's discretion, exhibits may be placed in the appropriate position, even if it is second or third place.

No dogs are permitted on the fairgrounds with the exception of assistant dogs or seeing eye dogs.

COLOURING CONTEST ENTRANT NAME: _____ AGE: _____

Bring your colouring contest entry to the Kidz Zone Tent at the Fall Fair before 5 pm on Saturday, Sept 24.

Exhibit Drop Off - Friday, Sept 23 noon to 6 pm

Last Name:	First Name:
Address:	
Phone:	
Age, if entering a junior class:	

ENTRY FEES

\$3 each for the first 4 entries
 \$2 each for additional entries
 \$3 each for Livestock entries
 \$2 each for Junior entries
 \$2 each for Junior Livestock entries

ENTRY FORM DEADLINES

**September 17 (10:30-12:30)
 & September 18 (12:30-2:30)**
 at the Farmers' Market info desk
 Late entries accepted with a 50%
 premium Friday, Sept. 23, noon-6 pm

EXHIBIT

PRIZES:

1st: \$3 + ribbon
 2nd: \$2 + ribbon
 3rd: \$1 + ribbon

SECTION	CLASS	DESCRIPTION	ENTRY FEE	WILL PICK UP*
*If you want your item returned, check box. All other items will be donated.			Total fees: \$	

Entry forms and fees can be dropped off Sept 17 & 18 at the Farmers' Market

Full digital copies of this booklet are available at prfarmers.ca/pages/powell-river-fall-fair

The Fall Fair is a PR Farmers' Agricultural Institute event.

The list of categories

*Note the category letter and the class number on your tear-out entry form on Page 3.
Find more printable copies of the entry form on prfarmers.ca.*

Part 1 – Adult Classes

Section A – Arts, Crafts, Hobbies

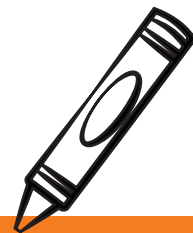
Will be judged on design, usefulness, finish and workmanship. In the case of models (model cars, ships etc.) may be made from kits.

- A1. Pictorial Art, Pencil Drawing – any single colour
- A2. Pictorial Art, Pencil Drawing – coloured
- A3. Pictorial Art Ink drawing
- A4. Pictorial Art, Watercolour Painting
- A5. Pictorial Art, Any other medium
- A6. Pictorial Art – open
- A7. Pottery, Utility – open
- A8. Pottery, Ornamental
- A9. Utility & Ornamental Crafts, Leatherwork
- A10. Utility & Ornamental Crafts, Sculpture – any medium
- A11. Utility & Ornamental Crafts, Jewelry
- A12. Utility & Ornamental Crafts, Stained Glass
- A13. Woodworking – open
- A14. Traditional Native Crafts – beadwork
- A15. Traditional Native Crafts – Cedar weaving
- A16. Traditional Native Crafts – Carving
- A17. Hobbies – Fly tying
- A18. Scrapbooking – any one page
- A19. Scrapbooking – one farm or harvest themed page
- A20. Greeting card – handmade, non-photo
- A21. Handmade Soap

Section B – Beer, Wine, Liquor

Will be judged on presentation, colour, clarity, bouquet, and taste. Presented in a plain, clear glass 750ml bottle. Bottle should be sealed with a cork or cap. Bottles must be filled to at least 1/2 in from the cork. Wines must be home made, not from kits or concentrates. Attach a label stating only the name of the berry, fruit, grape, or other primary ingredient. Do NOT use personalized labels or other identifying marks.

- B1. Grape Wine – Dry Red
- B2. Grape Wine – Sweet Red
- B3. Grape Wine – Dry White
- B4. Grape Wine – Sweet White
- B5. Grape Wine – Sparkling and Rose
- B6. Berry or Fruit wine – Dry
- B7. Berry or Fruit wine – Sweet
- B8. Mead
- B9. Cider – Apple
- B10. Cider – Any Other Variety
- B11. Beer – Light
- B12. Beer – Dark
- B13. Liqueur – any homemade



HEY KIDS!

Colour the Front Page to win!

5 & under - prizes for all submissions

Age 6-8 - Prizes for 1st, 2nd & 3rd

Ages 9-12 - Prizes for 1st, 2nd & 3rd

Drop your entry at the Kidz Zone Tent
before 5 pm on Saturday, Sept 24.

Section C – Clothing & Fibre Arts

Will be judged on presentation, overall impression, workmanship and suitability of materials for the project. All articles must be clean and in new condition. Articles that can be ironed and pressed must be finished in an appropriate manner and be wrinkle free. Hand spun entries should be labeled with fibre content, weight and yardage. Hand spun is judged on suitability for end use, which should be stated on label.

- C1. Sewing – Any Tailored Garment
- C2. Sewing – Children's Clothing
- C3. Sewing – Costume
- C4. Sewing – Any other Article – not listed elsewhere
- C5. Crochet – Open
- C6. Crochet – 3D Creature (Amigurumi)
- C7. Crochet – Garment
- C8. Knitting – Hats, Gloves, Socks
- C9. Knitting – Any other Garment
- C10. Knitting – Open
- C11. Handwork – Embroidery (on Fabric, Not on Canvas)
- C12. Handwork – Petit Point
- C13. Handwork – Any other Technique
- C14. Wet Felting – Any Garment or Accessory
- C15. Wet Felting – Open
- C16. Needle Felting – Open
- C17. Quilts – Crib or Lap Size
- C18. Quilts – Full Size
- C19. Quilting – Open
- C20. Quilting – Bag
- C21. Spinning – Single ply,
Undyed Natural Wool – 2 skeins
- C22. Spinning – Hand Dyed Yarn with Worked
Sample, any Fibre..... 1 skein plus sample
- C23. Spinning – Any other Fibre – 1 skein

Pacific Point MARKET

is proud to carry items from
these **local producers**:

Terra Nostra Farm	Chrysalis Flowers & Gifts
Mama Rania	Valdi Homestead
Blossomy Flowers Farm	Sweet Earth Soap Works
McDonald Farm	Gathered Farm & Flowers
Blueberry Common	Maywood Candle Co
Alice's Fresh Pasta	Local B.C. Spot Prawns

Enjoy the Fall Fair!

7013 Thunder Bay Street
Open daily 6 am – 10 pm

PacificPointMarket.com

Have fun
at the fair!

**For the
healthiest food,
grown year round,
we can help.**

Gardening and growing expertise
Lawn maintenance expertise
Composting expertise
Seed starter kits
Fertilizer
Plants
Seeds

Microgreen trays and heat pads
Potting soil & pots
Garden decor
Pest control
Bulbs
Tools
Trees



And there's always
more in store.



Mother Nature
Who knows better than Mother Nature?

Plus we have everything for your pets!

Go to our website and sign up for our newsletter,
or follow us on Facebook or Instagram to get tips and advice,
and be the first to know about sales and special events.

mother-nature.ca MotherNaturePowellRiver @mothernatureGHP
7050 Duncan Street 604.485.9878

- C24. Spinning – Any Novelty Yarn – 1 skein
- C25. Spinning – Any Project made from self hand spun Yarn
- C26. Toys – Open
- C27. Weaving – Open
- C28. Recycled Fabric Project – Open
- C29. Any other Clothing or Fibre Arts not already listed

Section D – Fruit

All Fruits must be in their natural state. Leave stems on tree fruit.

- D1. Apples – 3 per plate
- D2. Apricots – 3 per plate
- D3. Crabapples – 12 per plate
- D4. Peaches – 3 per plate
- D5. Pears – 3 per plate
- D6. Plums – 3 per plate
- D7. Currants, any Colour – 3 clusters
- D8. Gooseberries – 12 per plate
- D9. Brambles (Boysen, Logan etc) – 12 per plate
- D10. Blackberries – 12 per plate
- D11. Blueberries – 12 per plate
- D12. Raspberries – 12 per plate
- D13. Strawberries – 12 per plate
- D14. Grapes – Table – 1 cluster
- D15. Kiwi – 3 per plate
- D16. Figs – 3 per plate
- D17. Watermelon – 1 each
- D18. Melon, Any other – 1 each
- D19. Any other Fruit – Open
- D20. Nut – Filbert – 12 per plate
- D21. Nut – Walnut – 12 per plate
- D22. Nut – any other – 12 per plate
- D23. Collection of Fruit – min. 3 varieties

Section E – Eggs

Will be judged on quality, weight and shell. Graded by Canadian Egg Standards.

- E1. Eggs – Large White – 1 dozen
- E2. Eggs – Medium White – 1 dozen
- E3. Eggs – Large Brown – 1 dozen
- E4. Eggs – Medium Brown – 1 dozen
- E5. Eggs – any other colour Large – 1 dozen
- E6. Eggs – any other colour Medium – 1 dozen
- E7. Eggs – Bantam, any colour – 1 dozen
- E8. Eggs – Duck – 1/2 dozen
- E9. Eggs – Quail – 1/2 dozen
- E10. Eggs – Any other Variety – 1/2 dozen
- E11. Eggs – Largest – 1 Egg*

*N.B. * Indicates that this class is judged on one criterion, will not be scored and is not eligible for "Best in Section"*

Section F – Flowers

Will be judged on condition, colour, size and form. Where classes require more than one flower, uniformity will also be considered. All specimens must be from the entrant's own garden. Please supply a clear glass container, except for planted specimens.

- F1. Aster – 3 stems
- F2. Chrysanthemum – 3 stems
- F3. Calendula – 3 stems
- F4. Cosmos – 3 stems
- F5. Dahlia Cactus – 3 stems
- F6. Dahlia – Large Pompom – 3 stems
- F7. Dahlia – Small Pompom – 3 stems
- F8. Delphinium – 3 stems
- F9. Marigold, single petaled – 3 stems
- F10. Marigold – any other Variety – 3 stems
- F11. Roses – Hybrid Tea – 3 stems
- F12. Roses – Floribunda – 3 stems
- F13. Roses – Miniature – 3 stems

- F14. Snapdragons – 3 stems
- F15. Sunflower, ornamental – 3 stems
- F16. Sweet Peas – 12 stems
- F17. Zinnia – single Colour – 3 stems
- F18. Zinnia – any other Variety – 3 stems
- F19. Flower – any Other – 3 stems
- F20. Dried Flower Bouquet (in vase)
- F21. Flower Arrangement (in vase)

Section G, (Division 1) – Canning

Will be judged on appearance, texture and flavour, fill level and pack. Entries must have been dated after September 2021. Only standard canning jars may be used. Jars must be free of chips and cracks. Use new lids and rings. No wax seal. No cloth or paper lid covers. Leave metal ring on jar to prevent spills after judging. All entries MUST be labeled with the date processed. Personal identification must not be shown. All food MUST be processed, follow the jar manufacturers recommended processing times to ensure food safety.

One jar quantity of any of the following:

- G1. Jam – Blackberry
- G2. Jam – Raspberry
- G3. Jam – Strawberry
- G4. Jam – Wild Berry (state variety)
- G5. Jam – Any Stone Fruit
- G6. Any other variety
- G7. Jelly – Blackberry
- G8. Jelly – Crabapple
- G9. Jelly – Grape
- G10. Jelly – Any other variety
- G11. Marmalade – Seville
- G12. Marmalade – Any other variety
- G13. Apple Sauce
- G14. Cherries
- G15. Peaches
- G16. Plums
- G17. Pears

- G18. Fruit Salad
- G19. Whole Tomatoes
- G20. Ketchup – Tomato
- G21. Pickled Beets
- G22. Pickled Beans
- G23. Pickled Carrots
- G24. Pickled Onions
- G25. Pickles – Dill (Cucumber)
- G26. Pickles – Bread and Butter
- G27. Pickles – Any other variety
- G28. Relish – Cucumber
- G29. Relish – Zucchini
- G30. Relish – Any other variety
- G31. Chutney – Mango
- G32. Chutney – Tomato
- G33. Chutney – Stone Fruit
- G34. Chutney – Any other variety
- G35. Pepper Jelly
- G37. Sauerkraut

Section G (Division 2) – Baking

Will be judged on general appearance, internal appearance / texture, flavour and aroma. Wrap your entry in a clear plastic wrap or enclose in clear plastic bag. No commercial mixes or artificial fillings allowed.

- G38. Bread – Whole Wheat – 1 loaf
- G39. Bread – Multigrain – 1 loaf
- G40. Bread – French – 1 loaf
- G41. Bread – Sourdough – 1 loaf
- G42. Bread – Decorative or Sweet – 1 loaf
- G43. Bread – Gluten Free White – 1 loaf
- G44. Bread – Gluten Free Multigrain – 1 loaf
- G45. Bread – Any other variety – 1 loaf
- G46. Fancy Dinner Rolls – 6 each
- G47. Cinnamon Buns – 3 each
- G48. Muffins – Any Variety – 3 each
- G49. Cupcakes – Any Variety – 3 each

**Mention this ad
in the Fall Fair guide
for a 10% discount.**

Visit Top Shelf Feeds for:

- Hardware
- Water Buckets
- Wheel Barrows
- Post Pounders
- Fencing
- Dog Kennels
- Gates
- Bird Seed

and **Pet Food** for everything from gerbils to geldings.

Big or small, we feed them all!



We allow pets to bring their people into the store.
Find everything for your pet, livestock,
farm and garden needs.

604 485-2244

4480 Manson Avenue (corner of Duncan & Manson)

604.487.1175



Septic Tank Pumping
Installations and Repairs
Marine, RV and Holding Tank Pumping
Portable Toilet Rentals
Handwash Stations
Grease Traps
Catch Basins

30 years experience - fast friendly service

RuralSeptic.Dan@gmail.com

www.RuralSeptic.ca

- G50. Cake – Chocolate – 1 whole
- G51. Cake – Carrot – 1 whole
- G52. Cake – Gingerbread or Spice – 1 whole
- G53. Cake – Any other Variety – 1 whole
- G54. Loaf Banana – 1 whole
- G55. Loaf – Zucchini – 1 whole
- G56. Loaf – Any other Variety – 1 whole
- G57. Coffee Cake – Any Variety – 1 whole
- G58. Quick Bread – Open – 1 loaf size or 3 small
- G59. Tarts – Butter – 3 each
- G60. Tarts – Any other Variety – 3 each
- G61. Pie – Apple – 1 Pie
- G62. Pie – Blackberry – 1 Pie
- G63. Pie – Rhubarb – 1 Pie
- G64. Pie – Pumpkin – 1 Pie
- G65. Pie – Any other Variety – 1 Pie
- G66. Cookies – Chocolate Chip – 6
- G67. Cookies – Oatmeal – 6
- G68. Cookies – Peanut Butter – 6
- G69. Cookies – Ginger, Soft or Snap – 6
- G70. Cookies – Filled or Iced – 6
- G71. Cookies – Any other Variety – 6
- G71. Brownies – 6
- G72. Bars or Squares – 6
- G73. Baked Item open – please provide appropriate amount

Section G (Division 3) – Cake Decorating

- G74. Decorated – Harvest Theme
- G75. Decorated Cake – Child's Party
- G76. Decorated Cake – Open
- G77. Decorated Cupcake – Harvest Theme
- G78. Decorated Cupcake – Child's Party
- G79. Decorated Cupcake – Open

Section H – Honey & Bee Products

Honey will be judged on a National Scale. Judges will be looking for colour, brightness, flavour, freedom from; crystals: (liquid), air bubbles (liquid) and foreign material (all classes). Must be in clear, un-tinted glass container.

H1. Honey Liquid – 1 jar (Max. 500g)

H2. Beeswax

H3 Local Bee Products – Open

Section I – Photography

Pictures must not have been previously exhibited at the Powell River Fall Fair. Pictures should be mounted on suitable paper products, border not to exceed 4 cm.

I1. People – Black and White

I2. People – Colour

I3. Animals – Wild, Farm, Pet

I4. Birds, Reptiles, Insects, Fish

I5. Scenic – Colour or Black and White

I6. In the Garden – Any

I7. Agriculture – Colour or Black and White

I8. Action – Colour or Black and White

I9. Future Farmers (Kids & Agriculture) – Colour or Black and White

I10. Previous Fall Fair – Colour or Black and White

I11. Three or more photos that relate or tell a story

I12. Theme – “Bringing Families & Farmers Together”

I13. Professional Photography – any Subject

Section V – Vegetables

Will be judged on quality, condition, colour, form and size. Must be grown by exhibitor. Leaves and stems attached. Brush off potatoes, do not wash. Cut root vegetable stalks and onion stalks to 5-6 cm. Cabbages and similar vegetables should be properly washed and trimmed, do not over trim.

V1. Beans – Green – 6 Pods

V2. Beans – Wax – 6 Pods

VALLEY
has been your
LOCAL
building centre

helping farmers, contractors,
homeowners, and businesses
since 1974.

VALLEY
— Building Supplies Ltd. —

Mon-Fri 8-5

4290 Padgett Rd - llama spitting distance from the Fall Fair

**ALL JAMMED
OUT?**



Bring us your fruit, berries,
or grapes and we'll help you
turn them into delicious wine or cider.

Stop in, call, email or Facebook us for details on
how much fruit you need, and how to prepare it for brewing.



We make it easy!

7030 Glacier St | 604.485.0345 | prbrews.ca
Tues to Sat, 9 am – 5 pm or by appointment

- V3. Beans – Broad – 6 Pods
- V4. Beans – Scarlet Runner – 6 Pods
- V5. Beans – Any other Variety – 6 Pods
- V6. Beans – Dried – 10 Seeds
- V7. Beets – Globe – 3 each
- V8. Beets – Long – 3 each
- V9. Beets – Any colour other than solid red – 3 each
- V10. Broccoli – Green – 1 Head
- V11. Broccoli – Red – 1 Head
- V12. Broccoli – Sprouting – 6 Sprays
- V13. Brussel Sprouts – 6 each
- V14. Cabbage – Green – 1 Head
- V15. Cabbage – Savoy – 1 Head
- V16. Cabbage – Red – 1 Head
- V17. Cabbage – Largest – 1 Head
- V18. Cabbage – Asian – 1 Head
- V19. Carrots – Over 8" – 3 each
- V20. Carrot – Baby (3-6") – 6 Roots
- V21. Carrot – Any Other Colour – 3 Roots
- V22. Carrot – Largest – 1 Root*
- V23. Cauliflower – White – 1 Head
- V24. Cauliflower – Any other Variety – 1 Head
- V25. Celery – 1 Bunch, roots removed
- V26. Celeriac – 1 Root
- V27. Corn – 3 Ears
- V28. Corn Stalk – Tallest – 1*
- V29. Cucumber – Long English – 2 each
- V30. Cucumber – Slicing – 2 each
- V31. Cucumber – Pickling – 6 each
- V32. Cucumber – Any Other Variety – 2 each
- V33. Eggplant – Large Italian – 1 each
- V34. Eggplant – Any Other Variety – 1 each
- V35. Fennel – 1 Bulb
- V36. Garlic – 3 Bulbs
- V37. Gourds – Collection of 5
- V38. Kale – 6 Stems
- V39. Kohlrabi – 1 Bulb
- V40. Lettuce – Any Loose Leaf – 1 Head
- V41. Lettuce – Any Romaine/Cos – 1 Head
- V42. Lettuce – Any Crisp Head – 1 Head
- V43. Onions – Green – 6 each
- V44. Onions – Storage – 2 each
- V45. Onions – Sweet – 2 each
- V46. Onions – Any Other Variety – 2 each
- V47. Leeks – 3 each
- V48. Parsnips – 3 each
- V49. Peas – Shelling – 6 Pods
- V50. Peas – Snow – 6 Pods
- V51. Peas – Sugar Snap – 6 Pods
- V52. Peppers – Sweet Bell – 3 each
- V53. Peppers – Sweet, Any other Variety – 3 each
- V54. Peppers – Hot – 3 each
- V55. Potatoes – White Fleshed (name variety) – 5 Tubers
- V56. Potatoes – Yellow Fleshed – 5 Tubers
- V57. Potatoes – Fingerling – 5 Tubers
- V58. Potatoes – Sweet – 5 Tubers
- V59. Potatoes – Any Other Variety – 5 Tubers
- V60. Potato – Largest – 1*
- V61. Pumpkin – Standard Table – 1
- V62. Pumpkin – Pie Type – 1
- V63. Pumpkin – Largest – 1*
- V64. Pumpkin – Any Other Variety – 1
- V65. Radish – Bunch of 6
- V66. Rhubarb – 5 Stalks Trimmed, Base left Intact
- V77. Salad Greens – Non-Lettuce – 1 Bunch
- V78. Spinach – 2 Bunches, Roots Trimmed
- V79. Squash (Summer) – Zucchini, not over 10" – 2
- V80. Squash (Summer) – Any Other Variety – 2
- V81. Squash (Winter) – Acorn – 1
- V82. Squash (Winter) – Butternut – 1
- V83. Squash (Winter) – Delicata or other small – 1
- V84. Squash (Winter) – Hubbard – 1
- V85. Squash (Winter) – Spaghetti – 1

- V86. Squash (Winter) – Any Other Variety – 1
- V87. Squash (Winter) * – Largest (Not Including Pumpkin) – 1
- V88. Sunflower – Edible Seed – 1 Head
- V89. Sunflower Head * – Largest – 1 Head
- V90. Swiss Chard – 1 Bunch, Roots Removed
- V91. Tomato – Beefsteak – Stems on – 3
- V92. Tomato – Salad/Slicer (2-3") – 3
- V93. Tomato – Heirloom, Red – 3
- V94. Tomato – Heirloom, Any Other Colour – 3
- V95. Tomato – Paste Type – 3
- V96. Tomato – Cherry, Red – 1 Spray
- V97. Tomato – Cherry, Any Other Colour – 1 Spray
- V98. Tomato – Market Cluster on the Vine – min. 5 Fruit
- V99. Tomato – Largest – 1 *
- V100. Turnip / Rutabagas / Swedes – 2 each
- V101. Root Vegetable – Largest – 1 *
- V102. Vegetable – Most Unusual – Open – 1 *
- V103. Market Garden Collection – Min. 6 Vegetable Varieties (max. 1 Squash in Variety) Based on quality and customer appeal.
- V104. Root Cellar Collection, at least 3 Varieties, 2 of each, chosen from: Cabbage, Beets, Onions, Squash, Potatoes, Carrots, Parsnip, Rutabaga or Turnip
- V105. Braided Garlic, Onion or Shallot
- V106. Container Grown Vegetable – any – max Pot 10 Litre, any Shape
- V107. Container Grown Herb – any – max Pot 10 Litre, any Shape

*N.B. * indicates that this class is judged on one criterion, will not be scored and is not eligible for "Best in Section"*

Section P – Poultry

Will be judged according to APA standards. A limited number of display cages are available. Please bring your poultry in a correctly sized cage for appropriate display.

- P1. Standard Breed, Clean Legged – Hen
- P2. Standard Breed, Clean Legged – Rooster
- P3. Standard Breed, Feather Legged – Hen
- P4. Standard Breed, Feather Legged – Rooster
- P5. Commercial Utility (Isla Brown, Comet, etc) – Hen
- P6. Ornamental Breed – Hen
- P7. Ornamental Breed – Rooster
- P8. Bantam, Clean Legged – Hen
- P9. Bantam, Clean Legged – Rooster
- P10. Bantam, Feather Legged – Hen
- P11. Bantam, Feather Legged – Rooster
- P12. Duck, Any Other Variety – Hen
- P13. Duck, Any Other Variety – Drake
- P14. Goose, Any Variety – Hen
- P15. Goose, Any Variety – Gander
- P16. Turkey, Any Variety – Hen
- P17. Turkey, Any Variety – Tom
- P18. Poultry, Any Other Variety – Open

Section R – Rabbits

Will be judged according to ARBA standards. A limited number of display cages are available. Please bring your rabbits in a correctly sized cage appropriate for display. All un-tattooed rabbits will be ear-marked with a "Sharpie" upon entry unless photo I.D. is provided.

- R1. Commercial – Buck
- R2. Commercial – Doe
- R3. Fancy – Buck
- R4. Fancy – Doe
- R5. Fibre – Buck
- R6. Fibre – Doe

Rabbit Classes may be split into Junior and Senior at the judge's discretion.

Part 2 – Junior Classes

Section JA – Junior arts, crafts, and hobbies

Junior classes should see adult sections for specific parameters.

7 years and under

- JA1. Collage, cutting, and pasting
- JA2. Drawing, any medium
- JA3. Painting, any medium
- JA4. Print making, potato, leaf, etc.
- JA5. Painted t-shirt
- JA6. Lego, limit 2' x 2' mounted, no kits
- JA7. Puppet, hand crafted
- JA8. Play dough person or animal
- JA9. Birdhouse, any
- JA10. Any other not listed above, please specify

8 to 12 years

- JA1. Collage, cutting, and pasting
- JA2. Drawing, any medium
- JA3. Painting, any medium
- JA4. Pressed plant material project, open
- JA5. Painted t-shirt
- JA6. Lego, limit 2' x 2' mounted, no kits
- JA7. Puppet, hand crafted
- JA8. Sculpture, any medium
- JA9. Woodwork project, open
- JA10. Any other not listed above, please specify
- JA11. Computer generated greeting card
- JA12. Handmade greeting card
- JA13. Crochet, one article, any
- JA14. Knitting, one article, any
- JA15. Needlework, any

The team at *Springtime Garden Centre* congratulates all who enter the Fall Fair, and thanks all the volunteers!

Enjoy the show!
Springtime Garden Centre

Open 7 days a week 9:00am - 5:00pm
604-483-3681 • 5300 Yukon Avenue

springtimegc@gmail.com

 [SpringtimeGCPR](#)  [springtime_gc_powellriver](#)



Powell River Farmers' Agricultural Institute

*Supporting farmers,
farming & agricultural education,
and food systems in our region.*

PRFAI organizes the Fall Fair!

prfarmers.ca



JA16. Dreamcatcher, no kits

JA17. Best handwriting sample, 1 page, copy poem or story

JA18. Project made from at least 90% recycled materials, open

13 to 16 years

JA1. Collage, cutting, and pasting

JA2. Drawing, any medium

JA3. Painting, any medium

JA4. Lego, limit 2' x 2' mounted, no kits

JA5. Painted t-shirt

JA6. Pressed plant material project, open

JA7. Doll, dressed in hand made costume, any

JA8. Sculpture, any carving medium

JA9. Metal work project

JA10. Project made from at least 90% recycled materials, open

JA11. Any other not listed above, please specify

JA12. Computer art, one original

JA13. Crochet, one article, any

JA14. Knitting, one article, any

JA15. Needle work, any

JA16. Machine sewn art, any

JA17. Scrapbook, one page, school

JA18. Best handwriting sample, one page, story or poem



Rotary Club of Powell River



Rotary is pleased to support the Fall Fair. You can support the club by buying tickets at greatgroceryraffle.ca or at our Fall Fair booth.



Fill out an Imagine Rotary card to win a \$100 gift basket.

Have a great Fall Fair!

And remember, when you need

water purification systems, water tests, filters, pumps, UV lights, pool chemicals, Bio One drain cleaner, Roto-Brush air duct cleaning, purified bottled water, coffee, tea, janitorial and cleaning supplies, paper products, office supplies, restaurant supplies, smoothie and drink mixes, syrups, food packaging, masks and protective equipment, or any of the thousands of products we carry or can order for you,

call your friends at

Aaron

service & supply

604 485-5611 • 4703 Marine Ave

aaronservice.com • trevor@aaronservice.com

Section JD – Junior Fruits and Nuts

Junior classes should see adult sections for specific parameters

- JD1. Apples, stems attached, any variety, 3 to a plate
- JD2. Pears, stems attached, 3 to a plate
- JD3. Grapes, compact, uniform size and colour, with stems, 2 bunches
- JD4. Plums, stems attached, 6 to a plate
- JD5. Kiwi, regular kiwi fruit, 6 to a plate
- JD6. Blackberries, 12 specimens to a plate
- JD7. Fruit, any other variety, 3 to a plate
- JD8. Fruit collection, box or basket display
- JD9. Walnuts, 12 to a plate
- JD10. Filberts, 12 to a plate
- JD11. Nuts, any other, 12 to a plate

**only nuts from the previous year's crop should be shown*

Section JE – Junior Eggs

Junior classes should see adult sections for specific parameters

- JE1. Eggs, any variety, 1 dozen

Section JF – Junior Flowers

Junior classes should see adult sections for specific parameters

7 years and under

- JF1. Any cut flower, large (other than a sunflower), 3 blooms
- JF2. Any cut flower, small, 3 blooms
- JF3. Flower arrangement, garden varieties, in container
- JF4. Flower arrangement, wild varieties, in container
- JF5. Any potted plant, flower or vegetable
- JF6. Sunflower head, large*

8 to 16 years

- JF1. Any flower, large (other than sunflower), 3 blooms
- JF2. Any cut flower, small, 3 blooms
- JF3. Flower arrangement, garden varieties, in container
- JF4. Flower arrangement, wild varieties, in container
- JF5. Any potted plant, flower or vegetable
- JF6. Sunflower head, large*

*N.B. * indicates that this class is judged on one criterion, will not be scored and is not eligible for "Best in Section"*

Section JG – Junior Baking

Junior classes should see adult sections for specific parameters

7 years and under

- JG1. Cookies, any variety, 6 on a plate
- JG2. No-bake, any variety, 6 on a plate
- JG3. Cookies, 1 giant, iced and decorated *
- JG4. Quick bread, 1 loaf
- JG5. Cupcakes (no box mix), 3 on a plate

8 to 12 years

- JG1. Baking powder biscuits, 3 on a plate
- JG2. Cake, any flavour, iced or un-iced
- JG3. Cookies, any variety, 6 on a plate
- JG4. Brownies, 6 on a plate
- JG5. Muffins, any variety, 3 on a plate
- JG6. Giant cookie, decorated, 1 on a plate *
- JG7. Cake iced and decorated *
- JG8. Bread, 1 loaf, yeast bread
- JG9. Bread, quick bread, 1 loaf, any variety
- JG10. Squares or bars, any variety, 4 on a plate

13 to 16 years

- JG1. Baking powder biscuits, 3 on a plate
- JG2. Bread, 1 loaf, yeast bread
- JG3. Bread, quick bread, 1 loaf, any variety
- JG4. Cake, any flavour, un-iced or iced
- JG5. Cookies, any variety, 4 on a plate
- JG6. Brownies, 4 on a plate
- JG7. Muffins, any variety, 3 on a plate
- JG8. Squares or bars, any variety, 4 on a plate
- JG9. Cake, iced and decorated *

**not judged on taste or texture*

Section JI – Junior Photography

See adult sections for specific parameters

7 years and under

- Jl1. Coloured photo, pet
- Jl2. Coloured photo, any
- Jl3. Black and white photo, any

8 to 12 years

- Jl1. Coloured photo, animal
- Jl2. Coloured photo, scenic... discover your Powell River theme
- Jl3. Coloured photo, flower
- Jl4. Coloured photo, any
- Jl5. Coloured photo, 3 or more that tell a story or relate to each other
- Jl6. Black and white photo, any

13 to 16 years

- Jl1. Coloured photo, animal
- Jl2. Coloured photo, scenic...discover your Powell River theme
- Jl3. Coloured photo, flower
- Jl4. Coloured photo, any
- Jl5. Coloured photo, 3 or more that tell a story or relate to each other
- Jl6. Black and white photo, any

Section JV – Junior Vegetables

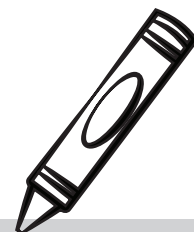
Junior classes should see adult sections for specific parameters

- JV1. Beans, any variety..... 3
- JV2. Carrots, any variety..... 3
- JV3. Corn, any variety..... 3 ears
- JV4. Peas, any variety..... 3 pods
- JV5. Pumpkin, any variety..... 1
- JV6. Pumpkin, largest..... 1
- JV7. Squash, any variety..... 1
- JV8. Tomato, any variety..... 3 fruits or 1 spray

Section JL – Junior Livestock

Open – Must include information about your animal including breed, name, age, care, and any interesting information. Be creative for public display, this will be part of judging.

- JL1. Rabbit
- JL2. Poultry
- JL3. Sheep
- JL4. Goat
- JL5. Swine
- JL6. Farm animal, other



HEY KIDS!

Colour the Front Page to win!

5 & under - prizes for all submissions

Age 6-8 - Prizes for 1st, 2nd & 3rd

Ages 9-12 - Prizes for 1st, 2nd & 3rd

**Drop your entry at the
Kidz Zone Tent before 5 pm
on Saturday, Sept 24.**

Fall Fair Schedules

STAGE EVENTS

Saturday, September 24

- 12:00 Opening Ceremonies
- 12:10 Music by Scout Mountain
- 3:00 Music by Blues Busters

Sunday, September 25

- 12:00 Music by Renelle & Dawson
- 3:00 Music by Dennis & the Menaces
- 4:30 Awards, 50/50 draw, closing

KIDS ZONE TENT

Build a scarecrow to take home - both days

Saturday, September 24

- 1:00 Potato Sack Race Registration
- 2:00 Potato Sack Races
- 1:00-4:00 Face Painting by Art of Joy
- 5:00 Colouring Contest Entry Deadline

Sunday September 25

- 1:00 Zucchini Race Registration
- 2:00 Zucchini Races
- 1:00-4:00 Face Painting by Art of Joy

Schedule is subject to change.



Park & Ride

Depart Town Centre Mall	Depart Paradise Exhibition Park
12:00	12:15
12:30	12:45
1:00	1:15
1:30	1:45
2:00	2:15
2:30	2:45
3:00	3:15
3:30	3:45
4:00	4:15
4:30	4:45

Bus Schedule

No parking on the fair grounds with the exception of handicap parking accessible off the Myrtle Avenue entrance.

Help out

Volunteers are always appreciated!
Contact Vanessa Adams-Valderrabano
at 604-578-8416 or thevaldis24@gmail.com